


47/49 TANNER ST,
LONDON,
SE1 3PL



www.uglyduck.org.uk





47/49 Tanner Street is a unique and atmospheric venue, available for hire for events, film and photography.

The warehouse was historically a Victorian tannery and many original features survive today. Three stunning floors of the original building feature wooden beams and floorboards and exposed brick walls. In addition, the site offers a walled yard, a rooftop with views of central London, and a sparse industrial concrete garage space.

47/49 Tanner Street is located just outside of the Congestion Charge zone, and has on-site parking for up to 18 cars. It is a 10 minute walk from London Bridge and Bermondsey tube stations, making it a conveniently accessible location.

47/49 Tanner Street is most commonly dry hire, though we do offer some inclusive events packages.





The Hub

The Hub is our light and airy ground floor studio, with wooden floors, red steel pillars, one exposed brick exterior wall and three white walls.

The Hub is 47/49 Tanner Street's only centrally heated space and disabled accessible space.

The Hub is adjacent to the Garage, and these spaces share toilet facilities.



Size 211 m²



Capacity 240



WC available, including disabled



Heated



100 x 13a sockets



The Factory

The Factory floor hosts 4 unique spaces, split into one main room and three smaller rooms, offering a variety of backgrounds and the opportunity to move between different rooms.

The Factory is usually hired with the Loft, as sound insulation between these spaces is poor and they share toilet and kitchenette facilities. Please note that neither space is centrally heated and hirers generally need to provide their own heaters in winter months.



Size 213 m²



Capacity 225 shared with Loft



WC available



Unheated



16 x 13a sockets



The Loft

The Loft is our most coveted space with wooden floors and beams, a stunning and versatile mezzanine, high pitched ceiling, exposed brickwork and huge windows on three sides.

The Loft is usually hired with the Factory, as sound insulation between these spaces is poor and they share toilet and kitchenette facilities. Please note that neither space is centrally heated and hirers generally need to provide their own heaters in winter months.



Size 264 m²



Capacity 225 shared with Factory



No WC



Unheated



10 x 13a sockets
32a 3-phase power



The Garage

The Garage is a large space with an urban warehouse aesthetic, painted brick walls, concrete floors, steel rafters, shutters and industrial features.

The Garage is a popular location for music videos, filming and photography. It is also used for events with an edgy, urban feel.



Size 339 m²



Capacity 100



No WC (shared with Hub)



Unheated



8 x 13a sockets, 32a power available via circuit board tie-in

The Rooftop

The Rooftop boasts excellent cityscape views, with sight lines to The Shard, Tower Bridge and the railway bridge.

The Rooftop is a great location for music videos, photography and filming.

Not available for events.



Size 113 m²



Capacity 15



No WC



External



No power





The Yard

A large, urban outdoor space, The Yard offers parking for up to 18 vehicles and secure gates leading onto Tanner Street.

Ideal for loading and parking, filming and photography, outdoor and summer events.



Size 102 m²



Capacity 100



No WC



External



One 16a outlet



Delegate Rates

Ugly Duck offers competitive rates for all-inclusive delegate packages.

The offer includes:

- AV: High quality PA system, inc wireless hand held mic and stand, up to 4 speakers, iPod connector, 2 lights to highlight presenter, 6500 lumens projector plus stand and screen, AV technician for the day
- Catering from one of our excellent partners, delicious cold lunches and breakfasts, snacks during breaks, tea and coffee all day
- Chairs for all delegates
- Up to 2 flipcharts and marker pens
- Basic cleaning after your event

The prices shown represent our basic offer. We are happy to work with you and our partners to create bespoke event packages.

	THE HUB			THE FACTORY & THE LOFT		
DELEGATES	BREAK-FAST ONLY	LUNCH ONLY	BREAK-FAST & LUNCH	BREAK-FAST ONLY	LUNCH ONLY	BREAK-FAST & LUNCH
40	£112	£124	£131	£134	£146	£152
60	£83	£94	£102	£95	£103	£114
80	£66	£78	£91	£75	£83	£94
100	£56	£67	£73	£63	£71	£81
120	£50	£61	£65	£55	£62	£71
150+	£45	£56	£60	£50	£56	£66





Away Days

Ugly Duck's bespoke away day packages will bring you into inspiring raw venues, giving you the perfect environment in which to think creatively, strengthen group dynamics and recalibrate your organisation's strategy. We have carefully selected a group of local independent suppliers who will make your away day exciting and memorable.

To build your perfect away day we offer a selection of lunch and breakfast options to pick and choose from, as well as a range of activities including 3D printing workshops, theatre sessions and treasure hunts.



Rates

We offer every client a bespoke quote for their hire, depending on the size of their crew, the length of the hire, the spaces they want to hire and what they use them for. We also offer discounts for charities.

Guideline prices:

Photography from £1000 per day

Filming from £1500 per day

Events from £2500 per day





Partners and Suppliers

We regularly work with a number of suppliers from across the filming and events industries who we are delighted to recommend.

Absolute Events
Event design, production, AV
www.absoluteevents.co.uk
0207 228 9200



Virginia's Vintage Hire
Furniture and Accessories
www.virginiavintagehire.co.uk
07815 313 536



Bread and Honey
Event and shoot catering
www.breadandhoneyevents.co.uk
020 8964 5255



Three Four Snap
Digital and Lighting
www.threefoursnap.com
0207 688 0203



Broadstone
Security
www.broadstonesecurity.co.uk
08444 745 001



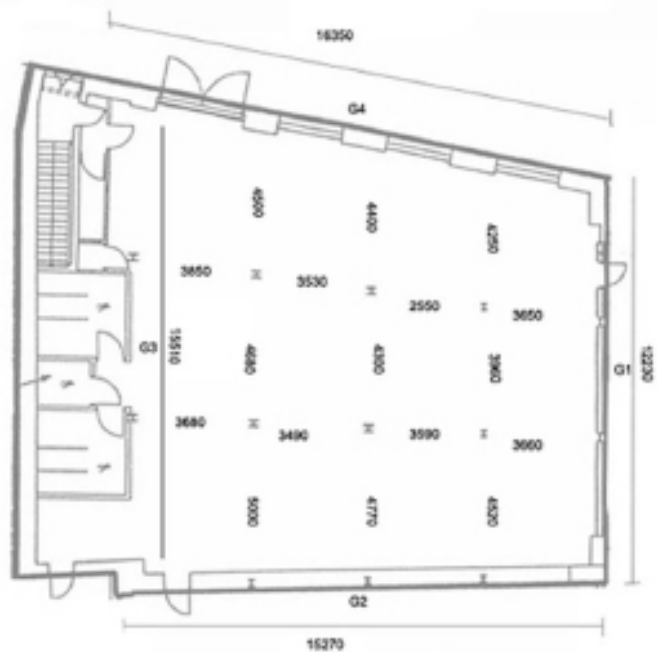
Ugly Duck is a social enterprise which uses enterprise and the arts to revitalise underused spaces.

When our spaces are not being used for commercial hires they host a wide range of creative and community projects, ranging from auditions and rehearsals, to educational projects with local children.

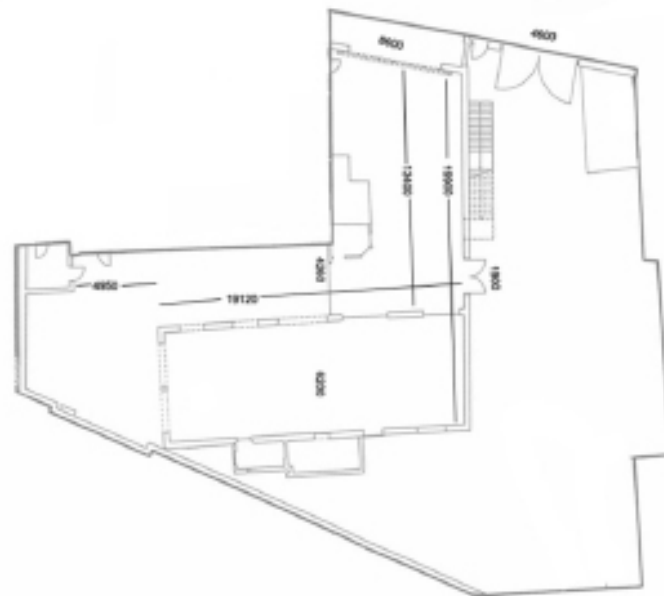
We work with a network of more than 300 creative professionals. If you are looking for set designers, lighting specialists, musicians or anything in between, get in touch and we'd be delighted to matchmake you!



Floor Plans



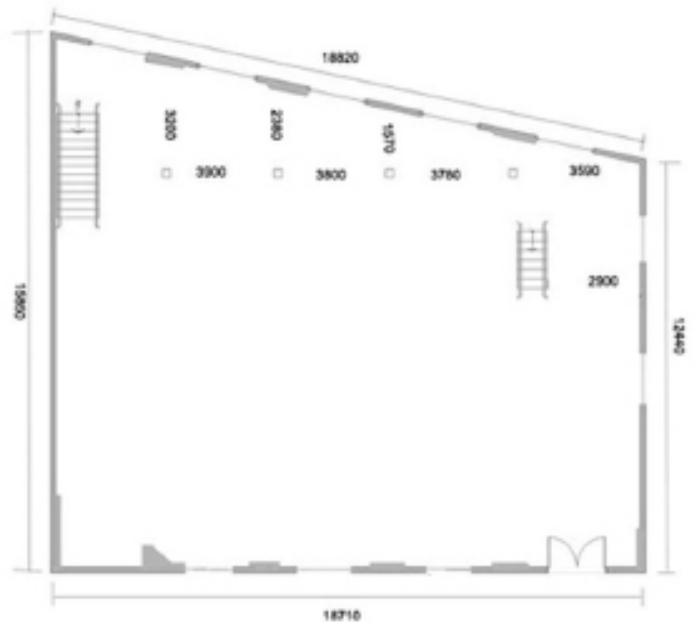
The Hub
221m²
Ground Floor



The Garage and Yard
339m² and 102m²
Ground Floor



The Factory
213m²
1st Floor



The Loft
264 m²
2nd Floor



Get in touch

If you would like to find out more, arrange a site visit and make a booking please contact us.

For events, contact Katy:
katy@uglyduck.org.uk
0203 701 1171

For filming and photography, contact Geradine:
geraldine@uglyduck.org.uk
0203 701 1666

Small print

Please note that we are an unlicensed venue and are generally not available for licensable events.

Events must finish by 10pm Sunday-Thursday or 10.30pm Friday and Saturday.

We do not confirm bookings more than 3 months in advance.

There is no lift in the building.

www.uglyduck.org.uk

